



Eagle Creek Park Foundation

Annual Report

Executive Summary

September 30th, 2024



In 2024, Eagle Creek Park didn't just have another year -it had a landmark one. As the seasons turned and hundreds of thousands of visitors walked its trails, paddled its waters, and explored its forests, the Eagle Creek Park Foundation worked quietly and tirelessly behind the scenes, weaving together a year defined by connection, discovery, and growth.

The year began with renewed energy. Community involvement was blossoming, partnerships were strengthening, and participation in park programs surged to record highs. Everywhere you turned, something meaningful was happening, new voices joining the conversation, new faces discovering the park for the first time, and new investments shaping the future of this beloved natural sanctuary.

Building a Stronger Park

Throughout the year, the Foundation focused on projects that would make the park safer, more inclusive, and more enriching for everyone.

A new **park-wide radio system** strengthened communication across the entire park, improving both coordination and safety for staff and visitors. A **bilingual naturalist** was contracted through Earth Charter Indiana, opening doors for Spanish-speaking guests and helping more families feel at home in nature. The Foundation also supported **veterinary care** for the park's education animals, those beloved ambassadors who inspire kids and adults alike to care about the natural world. And, step by step, mile by mile, the Foundation invested in **trail enhancements**, making the park's pathways safer, more sustainable, and more accessible for all who explore them.

Moments to Remember

The year's signature events were nothing short of extraordinary.

When the **total solar eclipse** swept across Indianapolis, Eagle Creek Park became a gathering place for people from around the world—families, scientists, photographers, and skywatchers—who experienced the awe of totality framed by the park's rolling hills and glittering reservoir.

Later, a unique partnership with WFYI brought "Survivorman" **Les Stroud** to Eagle Creek for a special member hike; an adventure that blended education, exploration, and a touch of wilderness celebrity.



Eagle Creek Park Foundation

Annual Report

Executive Summary

September 30th, 2024



Growing Together Through Partnerships

Partnerships old and new helped expand the park's reach in 2024. Collaborations with organizations like the **Sekhem Institute for Holistic Healing, Camptown**, and the **Hoosier Environmental Council** broadened programming, amplified conservation messages, and brought new communities into the fold.

Meanwhile, the newly launched **Partner Pass Program** opened the gates even wider. Through nonprofits such as **Big Brothers Big Sisters of Central Indiana, Starfish Initiative, and Brooke's Place**, families and youth gained new access to the restorative power of nature, many visiting the park for the very first time.

Members, Programs, and Milestones

Member events helped strengthen the park's community of supporters from the cheerful Spring Hike to the math-loving Pi Hike to engaging local author talks. In fact, **2024 broke membership pass sales records**, a clear sign of just how deeply the community values Eagle Creek Park.

Participation also soared in flagship programs:

- **Iron Eagle Paddle & Run** welcomed 160 athletes who paddled, ran, and pushed their limits.
- **The Youth Fishing Derby** brought in 250 young anglers, rods in hand and smiles on faces.

Looking Ahead

By the time winter settled in, the story of 2024 had become clear: it was a year of meaningful progress. Through donor generosity, strong partnerships, and a shared belief in the power of nature, the Eagle Creek Park Foundation helped expand access, strengthen infrastructure, and deepen educational experiences throughout the park.

Every day we are grateful to have Eagle Creek Park in our backyard and for the supporters, partners, and advocates that join us in our mission to Promote, Preserve, Protect, and Enhance the park we all love. Thank you.

Meghan Mustin
Executive Director



Eagle Creek Park Foundation

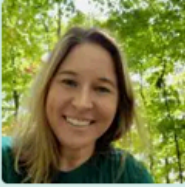
Annual Report

Board of Directors

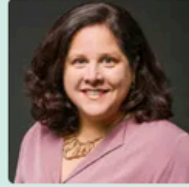
as of



Executive Committee



Meghan Mustin – Executive Director



Emily Storm-Smith President



Joshua Astin – Vice President



Stephen Cranfill – Secretary



Bernie Cinkoske – Treasurer



Greg Grossart – Asst. Treasurer

Board Members



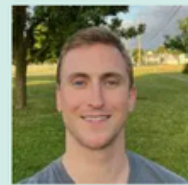
Lou Ann Baker



Brent Barta



Luke Brahm



Joe Brinkman



Jason Cookson



Mike Francis



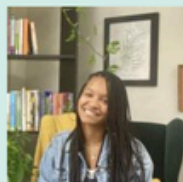
Glenda Hernandez



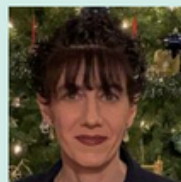
Andrew Keeler



Karen Klimowitch



Rachel Rhodes



Tabitha Klem



Eagle Creek Park Foundation

Annual Report

Statement of Financial Position

September 30, 2024



Assets		
Cash and Cash Equivalents	\$	88,426
Contributions Receivable	\$	23,696
Investments- Operating	\$	600,389
Cash and Cash Equivalents- Donor Restricted	\$	60,511
Investments- Donor Restricted	\$	2,818,590
Investments- Board Designated Endowment	\$	625,537
Investments- Endowment	\$	615,041
Total Assets	\$	4,832,190

Support and Revenues		
Contributions	\$	216,694
Membership Fees	\$	92,686
Retail Sales, Net of Cost	\$	24,393
Investment Gain Net	\$	488,864
Total Support and Revenues	\$	822,637



Eagle Creek Park Foundation

Annual Report

Statement of Financial Position

September 30, 2024



Liabilities		
Accounts Payable	\$	6,104
Deferred Membership Fees	\$	22,730
Total Support and Revenues	\$	28,834

Expenses		
Program Services	\$	323,455
Administrative	\$	198,651
Fundraising Expenses	\$	75,517
Total Support and Revenues	\$	597,623

Net Assets		
Without Donor Restrictions		
Undesignated	\$	659,981
Board Designated	\$	625,537
Total Net Assets Without Donor Restrictions	\$	1,285,518
Net Assets With Donor Restrictions	\$	3,517,838
Total Net Assets	\$	4,803,356
Total Liabilities and Net Assets	\$	4,832,190